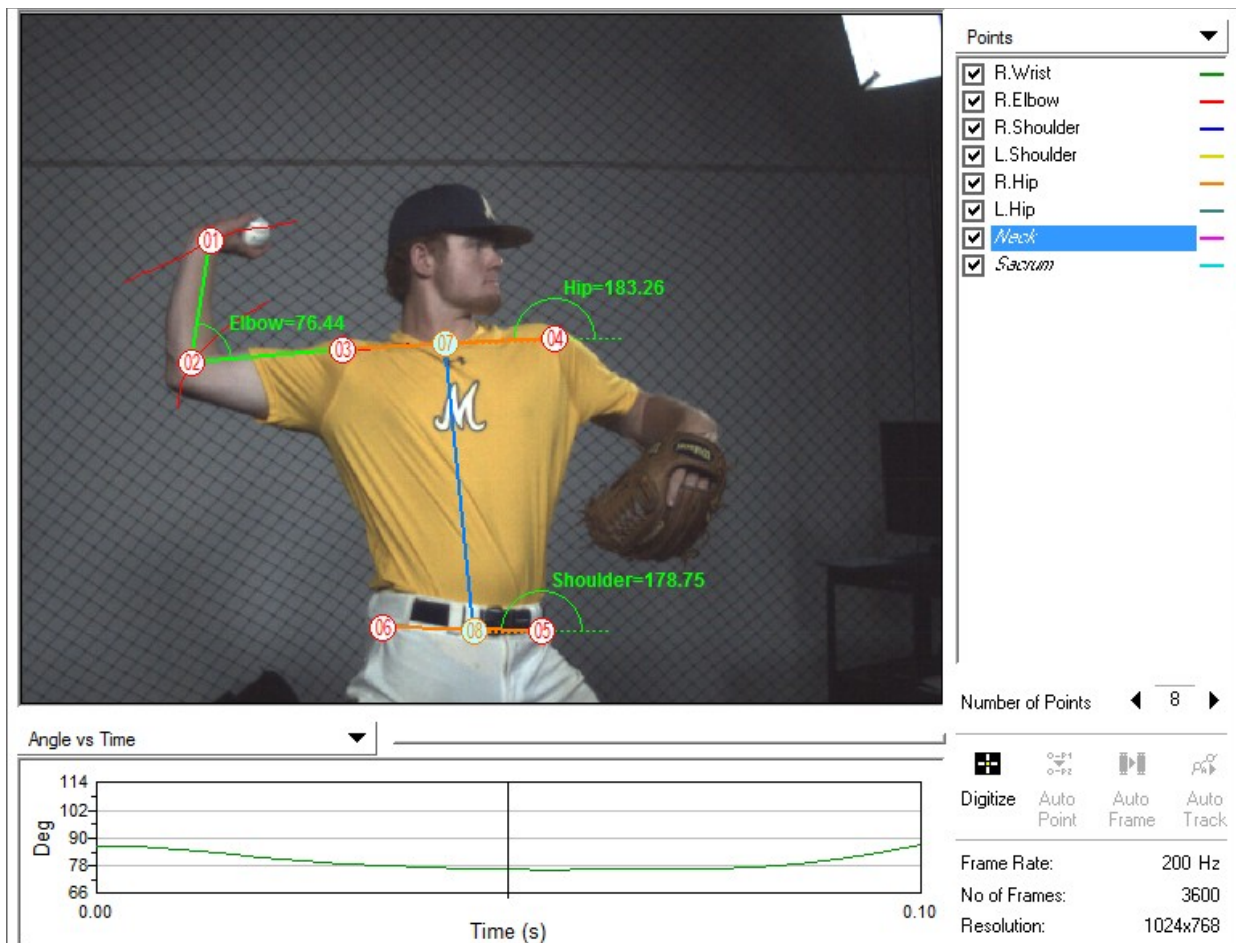


## MaxTRAQ 2D/Lite+

Flexible and easy to use 2D motion capture and analysis. Record from WebCams, Camcorders or from our Sentech or Max300 cameras. You can also import a series of picture files or video recorded by any camera.

Once you have recorded or imported your video, you can digitize points of interest or use the Automatic Marker Tracking feature in MaxTRAQ 2D. After you have digitized points, you can filter and interpolate the data and apply any of the tools such as angles, distances, projected points or body Center Of Mass. You can also scale the image, measure length or height using the caliper tool, create stick figures and apply notes to selected frames. Create static or moving 2D coordinate systems by selecting a digitized point as your Point of Origin. Exports files as ASCII or C3D. Both MaxTRAQ 2D and Lite+ are fully scriptable using MyBASIC2 scripting language.

MaxTRAQ comes in 2 editions, MaxTRAQ 2D and Lite+. The main difference is that Lite+ doesn't have the Automatic Marker Tracking. Software is compatible with Windows 7/8/10/11.



### Key Features

- Max Number of Points: 99
- Max Number of Cameras: 4
- Video Formats: AVI, MP4, MOV, MQR and more
- Picture Formats: BMP, JPEG, TIF, PNG
- Export Data: ASCII (TSV/CSV) and C3D
- Supports Sub-pixel accuracy
- Cameras Supported: Webcam and Camcorder via DirectShow, Sentech and Max300
- Tracking/Digitizing Modes: Manual, Semi-Manual and Auto-Tracking
- Measurements: Angles, Distances, Length, Height, Projected Points, COM
- Tools: Filters (Linear/Spline), Interpolation, Notes, Sticks, Scale, Place of Origin
- Events
- Fully Scriptable with built-in IDE
- Upgradeable to MaxTRAQ 3D or Single Camera 3D
- Licensing: Single, Hardware Dongle and Network
- Perpetual license. No annual subscription renewals